

---

## **PART I THE MOLECULAR DESIGN OF LIFE**

---

- Chapter 1** Prelude 3
- Chapter 2** Biochemical Evolution 19
- Chapter 3** Protein Structure and Function 41
- Chapter 4** Exploring Proteins 77
- Chapter 5** RNA, DNA, and the Flow of Genetic Information 117
- Chapter 6** Exploring Genes 143
- Chapter 7** Exploring Evolution (including Bioinformatics) 171
- Chapter 8** Enzymes: Basic Concepts and Kinetics 189
- Chapter 9** Catalytic Strategies 227
- Chapter 10** Regulatory Strategies: Enzymes and Hemoglobin 261
- Chapter 11** Carbohydrates 295
- Chapter 12** Lipids and Cell Membranes 319
- Chapter 13** Membrane Channels and Pumps 345

---

## **PART II TRANSDUCING AND STORING ENERGY**

---

- Chapter 14** Metabolism: Basic Concepts and Design 373
- Chapter 15** Signal-Transduction Pathways: An Introduction to Information Metabolism 395
- Chapter 16** Glycolysis and Gluconeogenesis 425
- Chapter 17** The Citric Acid Cycle 465

- Chapter 18** Oxidative Phosphorylation 491
- Chapter 19** The Light Reactions of Photosynthesis 527
- Chapter 20** The Calvin Cycle and the Pentose Phosphate Pathway 551
- Chapter 21** Glycogen Metabolism 577
- Chapter 22** Fatty Acid Metabolism 601
- Chapter 23** Protein Turnover and Amino Acid Catabolism 633

---

## **PART III SYNTHESIZING THE MOLECULES OF LIFE**

---

- Chapter 24** The Biosynthesis of Amino Acids 665
- Chapter 25** Nucleotide Biosynthesis 693
- Chapter 26** The Biosynthesis of Membrane Lipids and Steroids 715
- Chapter 27** DNA Replication, Recombination, and Repair 745
- Chapter 28** RNA Synthesis and Splicing 781
- Chapter 29** Protein Synthesis 813
- Chapter 30** The Integration of Metabolism 845
- Chapter 31** The Control of Gene Expression 867

---

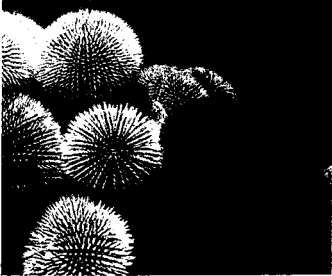
## **PART IV RESPONDING TO ENVIRONMENTAL CHANGES**

---

- Chapter 32** Sensory Systems
- Chapter 33** The Immune System
- Chapter 34** Molecular Motors

Preface	v
Tools and Techniques	x
Clinical Applications	xi
Molecular Evolution	xii
Acknowledgments	xv

## **PART I THE MOLECULAR DESIGN OF LIFE**

<b>CHAPTER 1 Prelude: Biochemistry and the Genomic Revolution</b>	<b>3</b>
1.1 DNA Illustrates the Relation Between Form and Function	4
1.1.1 DNA Is Constructed from Four Building Blocks	4
1.1.2 Two Single Strands of DNA Combine to Form a Double Helix	5
1.1.3 RNA Is an Intermediate in the Flow of Genetic Information	6
1.1.4 Proteins, Encoded by Nucleic Acids, Perform Most Cell Functions	6
1.2 Biochemical Unity Underlies Biological Diversity	7
1.3 Chemical Bonds in Biochemistry	8
	
1.3.1 Reversible Interactions of Biomolecules Are Mediated by Three Kinds of Noncovalent Bonds	9
1.3.2 The Properties of Water Affect the Bonding Abilities of Biomolecules	10
1.3.3 Entropy and the Laws of Thermodynamics	11
1.3.4 Protein Folding Can Be Understood in Terms of Free-Energy Changes	14
1.4 Biochemistry and Human Biology	15
Appendix: Depicting Molecular Structures	16

<b>CHAPTER 2 Biochemical Evolution</b>	<b>19</b>
2.1 Key Organic Molecules Are Used by Living Systems	20
2.1.1 Many Components of Biochemical Macromolecules Can Be Produced in Simple, Prebiotic Reactions	20
2.1.2 Uncertainties Obscure the Origins of Some Key Biomolecules	21

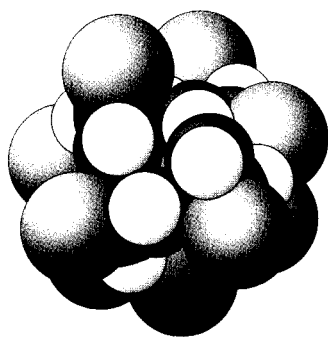
<b>2.2 Evolution Requires Reproduction, Variation, and Selective Pressure</b>	<b>21</b>
2.2.1 The Principles of Evolution Can Be Demonstrated in Vitro	22
2.2.2 RNA Molecules Can Act As Catalysts	23
2.2.3 Amino Acids and Their Polymers Can Play Biosynthetic and Catalytic Roles	23
2.2.4 RNA Template-Directed Polypeptide Synthesis Links the RNA and Protein Worlds	24
2.2.5 The Genetic Code Elucidates the Mechanisms of Evolution	25
2.2.6 Transfer RNAs Illustrate Evolution by Gene Duplication	26
2.2.7 DNA Is a Stable Storage Form for Genetic Information	26
<b>2.3 Energy Transformations Are Necessary to Sustain Living Systems</b>	<b>28</b>
2.3.1 ATP, a Common Currency for Biochemical Energy, Can Be Generated Through the Breakdown of Organic Molecules	28
2.3.2 Cells Were Formed by the Inclusion of Nucleic Acids Within Membranes	29
2.3.3 Compartmentalization Required the Development of Ion Pumps	30
2.3.4 Proton Gradients Can Be Used to Drive the Synthesis of ATP	31
2.3.5 Molecular Oxygen, a Toxic By-Product of Some Photosynthetic Processes, Can Be Utilized for Metabolic Purposes	32
<b>2.4 Cells Can Respond to Changes in Their Environments</b>	<b>33</b>
2.4.1 Filamentous Structures and Molecular Motors Enable Intracellular and Cellular Movement	34
2.4.2 Some Cells Can Interact to Form Colonies with Specialized Functions	35
2.4.3 The Development of Multicellular Organisms Requires the Orchestrated Differentiation of Cells	36
2.4.4 The Unity of Biochemistry Allows Human Biology to Be Effectively Probed Through Studies of Other Organisms	37

---

<b>CHAPTER 3 Protein Structure and Function</b>	<b>41</b>
---	-----------

<b>3.1 Proteins Are Built from a Repertoire of 20 Amino Acids</b>	<b>43</b>
<b>3.2 Primary Structure: Amino Acids Are Linked by Peptide Bonds to Form Polypeptide Chains</b>	<b>51</b>
3.2.1 Proteins Have Unique Amino Acid Sequences That Are Specified by Genes	53
3.2.2 Polypeptide Chains Are Flexible Yet Conformationally Restricted	54

3.3 Secondary Structure: Polypeptide Chains Can Fold into Regular Structures Such as the Alpha Helix, the Beta Sheet, and Turns and Loops	56
---	----



3.3.1 The Alpha Helix Is a Coiled Structure Stabilized by Intrachain Hydrogen Bonds	56
3.3.2 Beta Sheets Are Stabilized by Hydrogen Bonding Between Polypeptide Strands	58
3.3.3 Polypeptide Chains Can Change Direction by Making Reverse Turns and Loops	60
3.4 Tertiary Structure: Water-Soluble Proteins Fold into Compact Structures with Nonpolar Cores	61
3.5 Quaternary Structure: Polypeptide Chains Can Assemble into Multisubunit Structures	63
3.6 The Amino Acid Sequence of a Protein Determines Its Three-Dimensional Structure	64
3.6.1 Amino Acids Have Different Propensities for Forming Alpha Helices, Beta Sheets, and Beta Turns	66
3.6.2 Protein Folding Is a Highly Cooperative Process	68
3.6.3 Proteins Fold by Progressive Stabilization of Intermediates Rather Than by Random Search	68
3.6.4 Prediction of Three-Dimensional Structure from Sequence Remains a Great Challenge	69
3.6.5 Protein Modification and Cleavage Confer New Capabilities	69
Appendix: Acid-Base Concepts	73

---

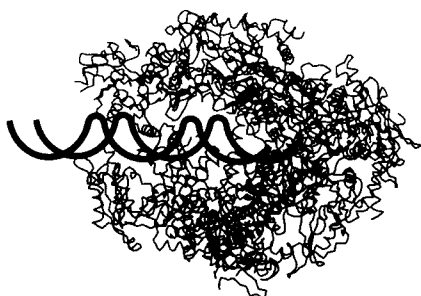
<b>CHAPTER 4 Exploring Proteins</b>	<b>77</b>
4.0.1 The Proteome Is the Functional Representation of the Genome	78
<b>4.1 The Purification of Proteins Is an Essential First Step in Understanding Their Function</b>	<b>78</b>
4.1.1 The Assay: How Do We Recognize the Protein That We Are Looking For?	78
4.1.2 Proteins Must Be Released from the Cell to Be Purified	79
4.1.3 Proteins Can Be Purified According to Solubility, Size, Charge, and Binding Affinity	80
4.1.4 Proteins Can Be Separated by Gel Electrophoresis and Displayed	83
4.1.5 A Protein Purification Scheme Can Be Quantitatively Evaluated	86
4.1.6 Ultracentrifugation Is Valuable for Separating Biomolecules and Determining Their Masses	87

4.1.7 The Mass of a Protein Can Be Precisely Determined by Mass Spectrometry	89
<b>4.2 Amino Acid Sequences Can Be Determined by Automated Edman Degradation</b>	<b>91</b>
4.2.1 Proteins Can Be Specifically Cleaved into Small Peptides to Facilitate Analysis	94
4.2.2 Amino Acid Sequences Are Sources of Many Kinds of Insights	96
4.2.3 Recombinant DNA Technology Has Revolutionized Protein Sequencing	97
<b>4.3 Immunology Provides Important Techniques with Which to Investigate Proteins</b>	<b>98</b>
4.3.1 Antibodies to Specific Proteins Can Be Generated	98
4.3.2 Monoclonal Antibodies with Virtually Any Desired Specificity Can Be Readily Prepared	100
4.3.3 Proteins Can Be Detected and Quantitated by Using an Enzyme-Linked Immunosorbent Assay	101
4.3.4 Western Blotting Permits the Detection of Proteins Separated by Gel Electrophoresis	103
4.3.5 Fluorescent Markers Make Possible the Visualization of Proteins in the Cell	103
<b>4.4 Peptides Can Be Synthesized by Automated Solid-Phase Methods</b>	<b>104</b>
<b>4.5 Three-Dimensional Protein Structure Can Be Determined by NMR Spectroscopy and X-Ray Crystallography</b>	<b>107</b>
4.5.1 Nuclear Magnetic Resonance Spectroscopy Can Reveal the Structures of Proteins in Solution	107
4.5.2 X-Ray Crystallography Reveals Three-Dimensional Structure in Atomic Detail	110

---

<b>CHAPTER 5 DNA, RNA, and the Flow of Genetic Information</b>	<b>117</b>
--	------------

<b>5.1 A Nucleic Acid Consists of Four Kinds of Bases Linked to a Sugar-Phosphate Backbone</b>	<b>118</b>
5.1.1 RNA and DNA Differ in the Sugar Component and One of the Bases	118
5.1.2 Nucleotides Are the Monomeric Units of Nucleic Acids	120
<b>5.2 A Pair of Nucleic Acid Chains with Complementary Sequences Can Form a Double-Helical Structure</b>	<b>121</b>



5.2.1	The Double Helix Is Stabilized by Hydrogen Bonds and Hydrophobic Interactions	121
5.2.2	The Double Helix Facilitates the Accurate Transmission of Hereditary Information	123
5.2.3	The Double Helix Can Be Reversibly Melted	124
5.2.4	Some DNA Molecules Are Circular and Supercoiled	125
5.2.5	Single-Stranded Nucleic Acids Can Adopt Elaborate Structures	126
<b>5.3</b>	<b>DNA Is Replicated by Polymerases That Take Instructions from Templates</b>	<b>127</b>
5.3.1	DNA Polymerase Catalyzes Phosphodiester-Bond Formation	127
5.3.2	The Genes of Some Viruses Are Made of RNA	128
<b>5.4</b>	<b>Gene Expression Is the Transformation of DNA Information into Functional Molecules</b>	<b>129</b>
5.4.1	Several Kinds of RNA Play Key Roles in Gene Expression	129
5.4.2	All Cellular RNA Is Synthesized by RNA Polymerases	130
5.4.3	RNA Polymerases Take Instructions from DNA Templates	131
5.4.4	Transcription Begins Near Promoter Sites and Ends at Terminator Sites	131
5.4.5	Transfer RNA Is the Adaptor Molecule in Protein Synthesis	132
<b>5.5</b>	<b>Amino Acids Are Encoded by Groups of Three Bases Starting from a Fixed Point</b>	<b>133</b>
5.5.1	Major Features of the Genetic Code	134
5.5.2	Messenger RNA Contains Start and Stop Signals for Protein Synthesis	135
5.5.3	The Genetic Code Is Nearly Universal	135
<b>5.6</b>	<b>Most Eukaryotic Genes Are Mosaics of Introns and Exons</b>	<b>136</b>
5.6.1	RNA Processing Generates Mature RNA	137
5.6.2	Many Exons Encode Protein Domains	137

---

<b>CHAPTER 6</b>	<b>Exploring Genes</b>	<b>143</b>
------------------	------------------------	------------

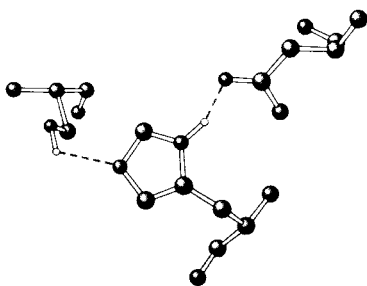
<b>6.1</b>	<b>The Basic Tools of Gene Exploration</b>	<b>144</b>
6.1.1	Restriction Enzymes Split DNA into Specific Fragments	144
6.1.2	Restriction Fragments Can Be Separated by Gel Electrophoresis and Visualized	145
6.1.3	DNA Is Usually Sequenced by Controlled Termination of Replication (Sanger Dideoxy Method)	146
6.1.4	DNA Probes and Genes Can Be Synthesized by Automated Solid-Phase Methods	148
6.1.5	Selected DNA Sequences Can Be Greatly Amplified by the Polymerase Chain Reaction	149
6.1.6	PCR Is a Powerful Technique in Medical Diagnostics, Forensics, and Molecular Evolution	151
<b>6.2</b>	<b>Recombinant DNA Technology Has Revolutionized All Aspects of Biology</b>	<b>151</b>

6.2.1	Restriction Enzymes and DNA Ligase Are Key Tools in Forming Recombinant DNA Molecules	152
6.2.2	Plasmids and Lambda Phage Are Choice Vectors for DNA Cloning in Bacteria	153
6.2.3	Specific Genes Can Be Cloned from Digests of Genomic DNA	155
6.2.4	Long Stretches of DNA Can Be Efficiently Analyzed by Chromosome Walking	156
<b>6.3</b>	<b>Manipulating the Genes of Eukaryotes</b>	<b>157</b>
6.3.1	Complementary DNA (cDNA) Prepared from mRNA Can Be Expressed in Host Cells	157
6.3.2	Gene-Expression Levels Can Be Comprehensively Examined	159
6.3.3	New Genes Inserted into Eukaryotic Cells Can Be Efficiently Expressed	160
6.3.4	Transgenic Animals Harbor and Express Genes That Were Introduced into Their Germ Lines	161
6.3.5	Gene Disruption Provides Clues to Gene Function	162
6.3.6	Tumor-Inducing Plasmids Can Be Used to Introduce New Genes into Plant Cells	163
<b>6.4</b>	<b>Novel Proteins Can Be Engineered by Site-Specific Mutagenesis</b>	<b>164</b>
6.4.1	Proteins with New Functions Can Be Created Through Directed Changes in DNA	164
6.4.2	Recombinant DNA Technology Has Opened New Vistas	165

---

## **CHAPTER 7 Exploring Evolution (Including Bioinformatics)** **171**

<b>7.1</b>	<b>Homologs Are Descended from a Common Ancestor</b>	<b>173</b>
<b>7.2</b>	<b>Statistical Analysis of Sequence Alignments Can Detect Homology</b>	<b>173</b>
7.2.1.	The Statistical Significance of Alignments Can Be Estimated by Shuffling	175
7.2.2.	Distant Evolutionary Relationships Can Be Detected Through the Use of Substitution Matrices	177
7.2.3.	Databases Can Be Searched to Identify Homologous Sequences	178
<b>7.3</b>	<b>Examination of Three-Dimensional Structure Enhances Our Understanding of Evolutionary Relationships</b>	<b>179</b>



<b>7.3.1</b>	<b>Tertiary Structure Is More Conserved Than Primary Structure</b>	<b>179</b>
--------------	--	------------

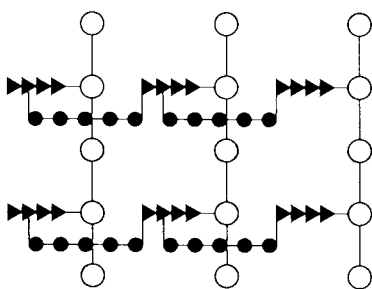


7.3.2 Knowledge of Three-Dimensional Structures Can Aid in the Evaluation of Sequence Alignments	180
7.3.3 Repeated Motifs Can Be Detected by Aligning Sequences with Themselves	181
7.3.4 Convergent Evolution: Common Solutions to Biochemical Challenges	182
7.3.5 Comparison of RNA Sequences Can Be a Source of Insight into Secondary Structures	182
7.4 Evolutionary Trees Can Be Constructed on the Basis of Sequence Information	183
7.5 Modern Techniques Make the Experimental Exploration of Evolution Possible	184
7.5.1 Ancient DNA Can Sometimes Be Amplified and Sequenced	184
7.5.2 Molecular Evolution Can Be Examined Experimentally	184

---

## **CHAPTER 8 Enzymes: Basic Concepts and Kinetics** **189**

8.1 Enzymes Are Powerful and Highly Specific Catalysts	190
8.1.1 Many Enzymes Require Cofactors for Activity	191
8.1.2 Enzymes May Transform Energy from One Form into Another	192
8.1.3 Enzymes Are Classified on the Basis of the Types of Reaction That They Catalyze	192
8.2 Free Energy Is a Useful Thermodynamic Function for Understanding Enzymes	193
8.2.1 The Free-Energy Change Provides Information About the Spontaneity but Not the Rate of a Reaction	193
8.2.2 The Standard Free-Energy Change of a Reaction Is Related to the Equilibrium Constant	194
8.2.3 Enzymes Alter Only the Reaction Rate and Not the Reaction Equilibrium	196
8.3 Enzymes Accelerate Reactions by Facilitating the Formation of the Transition State	196



8.3.1 The Formation of an Enzyme–Substrate Complex Is the First Step in Enzymatic Catalysis	197
8.3.2 The Active Sites of Enzymes Have Some Common Features	198
8.4. The Michaelis-Menten Model Accounts for the Kinetic Properties of Many Enzymes	200
8.4.1 The Significance of $K_M$ and $V_{max}$ Values	203
8.4.2 Kinetic Perfection in Enzymatic Catalysis: The $k_{cat}/K_M$ Criterion	205

8.4.3 Most Biochemical Reactions Include Multiple Substrates	207
8.4.4 Allosteric Enzymes Do Not Obey Michaelis-Menten Kinetics	208
<b>8.5 Enzymes Can Be Inhibited by Specific Molecules</b>	<b>209</b>
8.5.1 Competitive and Noncompetitive Inhibition Are Kinetically Distinguishable	210
8.5.2 Irreversible Inhibitors Can Be Used to Map the Active Site	210
8.5.3 Transition-State Analogs Are Potent Inhibitors of Enzymes	213
8.5.4 Catalytic Antibodies Demonstrate the Importance of Selective Binding of the Transition State to Enzymatic Activity	213
8.5.5 Penicillin Irreversibly Inactivates a Key Enzyme in Bacterial Cell-Wall Synthesis	214
<b>8.6 Vitamins Are Often Precursors to Coenzymes</b>	<b>216</b>
8.6.1 Water-Soluble Vitamins Function As Coenzymes	217
8.6.2 Fat-Soluble Vitamins Participate in Diverse Processes Such As Blood Clotting and Vision	219
Appendix: $V_{\max}$ and $K_M$ Can Be Determined by Double-Reciprocal Plots	221

---

<b>CHAPTER 9 Catalytic Strategies</b>	<b>227</b>
---------------------------------------	------------

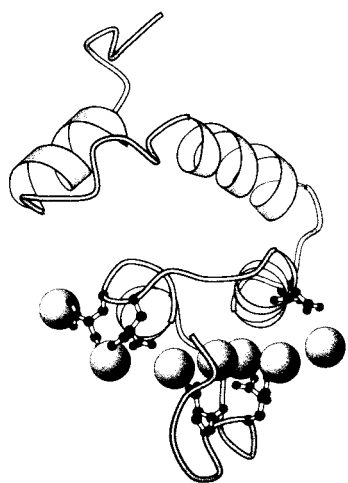
9.0.1 A Few Basic Catalytic Principles Are Used by Many Enzymes	228
<b>9.1 Proteases: Facilitating a Difficult Reaction</b>	<b>228</b>
9.1.1 Chymotrypsin Possesses a Highly Reactive Serine Residue	229
9.1.2 Chymotrypsin Action Proceeds in Two Steps Linked by a Covalently Bound Intermediate	230
9.1.3 Serine Is Part of a Catalytic Triad That Also Includes Histidine and Aspartic Acid	231
9.1.4 Catalytic Triads Are Found in Other Hydrolytic Enzymes	234
9.1.5 The Catalytic Triad Has Been Dissected by Site-Directed Mutagenesis	236
9.1.6 Cysteine, Aspartyl, and Metalloproteases Are Other Major Classes of Peptide-Cleaving Enzymes	236
9.1.7 Protease Inhibitors Are Important Drugs	238
<b>9.2 Making a Fast Reaction Faster: Carbonic Anhydrases</b>	<b>239</b>
9.2.1 Carbonic Anhydrase Contains a Bound Zinc Ion Essential for Catalytic Activity	240
9.2.2 Catalysis Entails Zinc Activation of Water	241
9.2.3 A Proton Shuttle Facilitates Rapid Regeneration of the Active Form of the Enzyme	242
9.2.4 Convergent Evolution Has Generated Zinc-Based Active Sites in Different Carbonic Anhydrases	244
<b>9.3 Restriction Enzymes: Performing Highly Specific DNA-Cleavage Reactions</b>	<b>245</b>
9.3.1 Cleavage Is by In-Line Displacement of 3' Oxygen from Phosphorus by Magnesium-Activated Water	246

9.3.2 Restriction Enzymes Require Magnesium for Catalytic Activity	248
9.3.3 The Complete Catalytic Apparatus Is Assembled Only Within Complexes of Cognate DNA Molecules, Ensuring Specificity	248
9.3.4 Type II Restriction Enzymes Have a Catalytic Core in Common and Are Probably Related by Horizontal Gene Transfer	251
<b>9.4 Nucleoside Monophosphate Kinases: Catalyzing Phosphoryl Group Exchange Between Nucleotides Without Promoting Hydrolysis</b>	<b>252</b>
9.4.1 NMP Kinases Are a Family of Enzymes Containing P-Loop Structures	253
9.4.2 Magnesium (or Manganese) Complexes of Nucleotide Triphosphates Are the True Substrates for Essentially All NTP-Dependent Enzymes	254
9.4.3 ATP Binding Induces Large Conformational Changes	255
9.4.4 P-Loop NTPase Domains Are Present in a Range of Important Proteins	255

---

**CHAPTER 10 Regulatory Strategies: Enzymes and Hemoglobin** **261**

<b>10.1 Aspartate Transcarbamoylase Is Allosterically Inhibited by the End Product of Its Pathway</b>	<b>262</b>
10.1.1 ATCase Consists of Separable Catalytic and Regulatory Subunits	263
10.1.2 Allosteric Interactions in ATCase Are Mediated by Large Changes in Quaternary Structure	264
10.1.3 Allosterically Regulated Enzymes Do Not Follow Michaelis-Menten Kinetics	267
10.1.4 Allosteric Regulators Modulate the T-to-R Equilibrium	267
10.1.5 The Concerted Model Can Be Formulated in Quantitative Terms	268
10.1.6 Sequential Models Also Can Account for Allosteric Effects	269
<b>10.2 Hemoglobin Transports Oxygen Efficiently by Binding Oxygen Cooperatively</b>	<b>269</b>



10.2.1 Oxygen Binding Induces Substantial Structural Changes at the Iron Sites in Hemoglobin	270
--	-----

10.2.2 Oxygen Binding Markedly Changes the Quaternary Structure of Hemoglobin	271
10.2.3 Tuning the Oxygen Affinity of Hemoglobin: The Effect of 2,3-Bisphosphoglycerate	272
10.2.4 The Bohr Effect: Hydrogen Ions and Carbon Dioxide Promote the Release of Oxygen	273
<b>10.3 Isozymes Provide a Means of Regulation Specific to Distinct Tissues and Developmental Stages</b>	<b>274</b>
<b>10.4 Covalent Modification Is a Means of Regulating Enzyme Activity</b>	<b>275</b>
10.4.1 Phosphorylation Is a Highly Effective Means of Regulating the Activities of Target Proteins	276
10.4.2 Cyclic AMP Activates Protein Kinase A by Altering the Quaternary Structure	278
10.4.3 ATP and the Target Protein Bind to a Deep Cleft in the Catalytic Subunit of Protein Kinase A	279
<b>10.5 Many Enzymes Are Activated by Specific Proteolytic Cleavage</b>	<b>280</b>
10.5.1 Chymotrypsinogen Is Activated by Specific Cleavage of a Single Peptide Bond	281
10.5.2 Proteolytic Activation of Chymotrypsinogen Leads to the Formation of a Substrate-Binding Site	281
10.5.3 The Generation of Trypsin from Trypsinogen Leads to the Activation of Other Zymogens	282
10.5.4 Some Proteolytic Enzymes Have Specific Inhibitors	283
10.5.5 Blood Clotting Is Accomplished by a Cascade of Zymogen Activations	284
10.5.6 Fibrinogen Is Converted by Thrombin into a Fibrin Clot	285
10.5.7 Prothrombin Is Readied for Activation by a Vitamin K-Dependent Modification	287
10.5.8 Hemophilia Revealed an Early Step in Clotting	288
10.5.9 The Clotting Process Must Be Precisely Regulated	289

---

## **CHAPTER 11 Carbohydrates** **295**

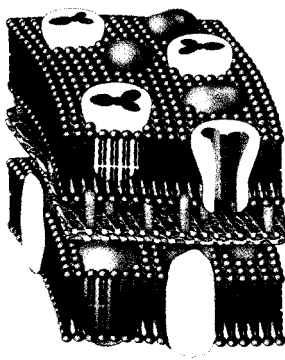
<b>11.1 Monosaccharides Are Aldehydes or Ketones with Multiple Hydroxyl Groups</b>	<b>296</b>
11.1.1 Pentoses and Hexoses Cyclize to Form Furanose and Pyranose Rings	298
11.1.2 Conformation of Pyranose and Furanose Rings	300
11.1.3 Monosaccharides Are Joined to Alcohols and Amines Through Glycosidic Bonds	300
<b>11.2 Complex Carbohydrates Are Formed by Linkage of Monosaccharides</b>	<b>301</b>
11.2.1 Sucrose, Lactose, and Maltose Are the Common Disaccharides	302
11.2.2 Glycogen and Starch Are Mobilizable Stores of Glucose	302
11.2.3 Cellulose, the Major Structural Polymer of Plants, Consists of Linear Chains of Glucose Units	303
11.2.4 Glycosaminoglycans Are Anionic Polysaccharide Chains Made of Repeating Disaccharide Units	304

11.2.5 Specific Enzymes Are Responsible for Oligosaccharide Assembly	304
<b>11.3 Carbohydrates Can Be Attached to Proteins to Form Glycoproteins</b>	<b>306</b>
11.3.1 Carbohydrates May Be Linked to Proteins Through Asparagine ( <i>N</i> -Linked) or Through Serine or Threonine ( <i>O</i> -Linked) Residues	306
11.3.2 Protein Glycosylation Takes Place in the Lumen of the Endoplasmic Reticulum and the Golgi Complex	307
11.3.3 <i>N</i> -Linked Glycoproteins Acquire Their Initial Sugars from Dolichol Donors in the Endoplasmic Reticulum	308
11.3.4 Transport Vesicles Carry Proteins from the Endoplasmic Reticulum to the Golgi Complex for Further Glycosylation and Sorting	309
11.3.5 Mannose 6-phosphate Targets Lysosomal Enzymes to Their Destinations	310
11.3.6 Glucose Residues Are Added and Trimmed to Aid in Protein Folding	310
11.3.7 Oligosaccharides Can Be “Sequenced”	311
<b>11.4 Lectins Are Specific Carbohydrate-Binding Proteins</b>	<b>312</b>
11.4.1 Lectins Promote Interactions Between Cells	313
11.4.2 Influenza Virus Binds to Sialic Acid Residues	314

---

<b>CHAPTER 12 Lipids and Cell Membranes</b>	<b>319</b>
---	------------

12.1 Many Common Features Underlie the Diversity of Biological Membranes	320
12.2 Fatty Acids Are Key Constituents of Lipids	320



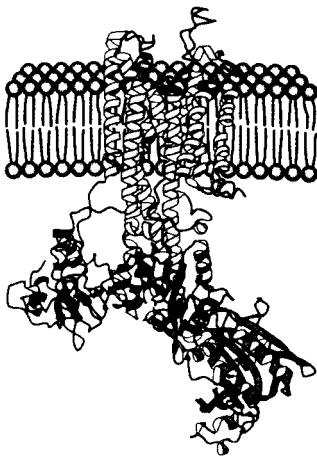
12.2.1 The Naming of Fats	320
12.2.2 Fatty Acids Vary in Chain Length and Degree of Unsaturation	321
<b>12.3 There Are Three Common Types of Membrane Lipids</b>	<b>322</b>
12.3.1 Phospholipids Are the Major Class of Membrane Lipids	322
12.3.2 Archaeal Membranes Are Built from Ether Lipids with Branched Chains	324
12.3.3 Membrane Lipids Can Also Include Carbohydrate Moieties	324

12.3.4 Cholesterol Is a Lipid Based on a Steroid Nucleus	325
12.3.5 A Membrane Lipid Is an Amphipathic Molecule Containing a Hydrophilic and a Hydrophobic Moiety	325
<b>12.4 Phospholipids and Glycolipids Readily Form Bimolecular Sheets in Aqueous Media</b>	<b>326</b>
12.4.1 Lipid Vesicles Can Be Formed from Phospholipids	327
12.4.2 Lipid Bilayers Are Highly Impermeable to Ions and Most Polar Molecules	328
<b>12.5 Proteins Carry Out Most Membrane Processes</b>	<b>329</b>
12.5.1 Proteins Associate with the Lipid Bilayer in a Variety of Ways	329
12.5.2 Proteins Interact with Membranes in a Variety of Ways	330
12.5.3 Some Proteins Associate with Membranes Through Covalently Attached Hydrophobic Groups	333
12.5.4 Transmembrane Helices Can Be Accurately Predicted from Amino Acid Sequences	334
<b>12.6 Lipids and Many Membrane Proteins Diffuse Rapidly in the Plane of the Membrane</b>	<b>335</b>
12.6.1 The Fluid Mosaic Model Allows Lateral Movement but Not Rotation Through the Membrane	336
12.6.2 Membrane Fluidity Is Controlled by Fatty Acid Composition and Cholesterol Content	337
12.6.3 All Biological Membranes Are Asymmetric	338
<b>12.7 Eukaryotic Cells Contain Compartments Bounded by Internal Membranes</b>	<b>338</b>
12.7.1 Proteins Are Targeted to Specific Compartments by Signal Sequences	339
12.7.2 Membrane Budding and Fusion Underlie Several Important Biological Processes	341

---

## **CHAPTER 13 Membrane Channels and Pumps 345**

<b>13.1 The Transport of Molecules Across a Membrane May Be Active or Passive</b>	<b>346</b>
13.1.1 Many Molecules Require Protein Transporters to Cross Membranes	346
13.1.2 Free Energy Stored in Concentration Gradients Can Be Quantified	347
<b>13.2 A Family of Membrane Proteins Uses ATP Hydrolysis to Pump Ions Across Membranes</b>	<b>347</b>
13.2.1 The Sarcoplasmic Reticulum $\text{Ca}^{2+}$ ATPase Is an Integral Membrane Protein	348
13.2.2 P-Type ATPases Are Evolutionarily Conserved and Play a Wide Range of Roles	350
13.2.3 Digitalis Specifically Inhibits the $\text{Na}^{+}$ - $\text{K}^{+}$ Pump by Blocking Its Dephosphorylation	350
<b>13.3 Multidrug Resistance and Cystic Fibrosis Highlight a Family of Membrane Proteins with ATP-Binding Cassette Domains</b>	<b>351</b>



13.4 Secondary Transporters Use One Concentration Gradient to Power the Formation of Another	352
13.5 Specific Channels Can Rapidly Transport Ions Across Membranes	353
13.5.1 Patch-Clamp Conductance Measurements Reveal the Activities of Single Channels	354
13.5.2 Ion-Channel Proteins Are Built of Similar Units	355
13.5.3 Action Potentials Are Mediated by Transient Changes in $\text{Na}^+$ and $\text{K}^+$ Permeability	357
13.5.4 The Sodium Channel Is an Example of a Voltage-Gated Channel	358
13.5.5 Potassium Channels Are Homologous to the Sodium Channel	359
13.5.6 The Structure of a Potassium Channel Reveals the Basis of Rapid Ion Flow with Specificity	359
13.5.7 The Structure of the Potassium Channel Explains Its Rapid Rates of Transport	362
13.5.8 A Channel Can Be Inactivated by Occlusion of the Pore: The Ball-and-Chain Model	363
13.6 Gap Junctions Allow Ions and Small Molecules to Flow Between Communicating Cells	363

---

## **PART II TRANSDUCING AND STORING ENERGY**

---

<b>CHAPTER 14 Metabolism: Basic Concepts and Design</b>	<b>373</b>
14.0.1 Cells Transform Different Types of Energy	374
14.1 Metabolism Is Composed of Many Coupled, Interconnecting Reactions	374
14.1.1 A Thermodynamically Unfavorable Reaction Can Be Driven by a Favorable One	375
14.1.2 ATP Is the Universal Currency of Free Energy in Biological Systems	376
14.1.3 ATP Hydrolysis Drives Metabolism by Shifting the Equilibrium of Coupled Reactions	377
14.1.4 Structural Basis of the High Phosphoryl Transfer Potential of ATP	378

14.1.5 Phosphoryl Transfer Potential Is an Important Form of Cellular Energy Transformation	379
<b>14.2 The Oxidation of Carbon Fuels Is an Important Source of Cellular Energy</b>	<b>380</b>
14.2.1 High Phosphoryl Transfer Potential Compounds Can Couple Carbon Oxidation to ATP Synthesis	381
14.2.2 Ion Gradients Across Membranes Provide an Important Form of Cellular Energy That Can Be Coupled to ATP Synthesis	382
14.2.3 Stages in the Extraction of Energy from Foodstuffs	382
<b>14.3 Metabolic Pathways Contain Many Recurring Motifs</b>	<b>383</b>
14.3.1 Activated Carriers Exemplify the Modular Design and Economy of Metabolism	383
14.3.2 Key Reactions Are Reiterated Throughout Metabolism	386
14.3.3 Metabolic Processes Are Regulated in Three Principal Ways	390
14.3.4 Evolution of Metabolic Pathways	391
<hr/>	
<b>CHAPTER 15 Signal-Transduction Pathways: An Introduction to Information Metabolism</b>	<b>395</b>
15.0.1 Signal Transduction Depends on Molecular Circuits: An Overview	396
<b>15.1 Seven-Transmembrane-Helix Receptors Change Conformation in Response to Ligand Binding and Activate G Proteins</b>	<b>398</b>
15.1.1 Ligand Binding to 7TM Receptors Leads to the Activation of G Proteins	399
15.1.2 G Proteins Cycle Between GDP- and GTP-Bound Forms	399
15.1.3 Activated G Proteins Transmit Signals by Binding to Other Proteins	401
15.1.4 G Proteins Spontaneously Reset Themselves Through GTP Hydrolysis	402
15.1.5 Cyclic AMP Stimulates the Phosphorylation of Many Target Proteins by Activating Protein Kinase A	403
<b>15.2 The Hydrolysis of Phosphatidyl Inositol Bisphosphate by Phospholipase C Generates Two Messengers</b>	<b>403</b>
15.2.1 Inositol 1,4,5-trisphosphate Opens Channels to Release Calcium Ions from Intracellular Stores	405
15.2.2 Diacylglycerol Activates Protein Kinase C, Which Phosphorylates Many Target Proteins	406
<b>15.3 Calcium Ion Is a Ubiquitous Cytosolic Messenger</b>	<b>408</b>
15.3.1 Ionophores Allow the Visualization of Changes in Calcium Concentration	408
15.3.2 Calcium Activates the Regulatory Protein Calmodulin, Which Stimulates Many Enzymes and Transporters	410
<b>15.4 Some Receptors Dimerize in Response to Ligand Binding and Signal by Cross-Phosphorylation</b>	<b>411</b>



15.4.1 Some Receptors Contain Tyrosine Kinase Domains Within Their Covalent Structures 414

15.4.2 Ras, Another Class of Signaling G Protein 415

**15.5 Defects in Signaling Pathways Can Lead to Cancer and Other Diseases 416**

15.5.1 Protein Kinase Inhibitors May Be Effective Anticancer Drugs 418

15.5.2 Cholera and Whooping Cough Are Due to Altered G-Protein Activity 418

15.6 Recurring Features of Signal-Transduction Pathways Reveal Evolutionary Relationships 419

---

**CHAPTER 16 Glycolysis and Gluconeogenesis 425**

16.0.1 Glucose Is an Important Fuel for Most Organisms 426

16.0.2 Fermentations Provide Usable Energy in the Absence of Oxygen 426

**16.1 Glycolysis Is an Energy-Conversion Pathway in Many Organisms 428**

16.1.1 Hexokinase Traps Glucose in the Cell and Begins Glycolysis 428

16.1.2 The Formation of Fructose 1,6-bisphosphate from Glucose 6-phosphate 430

16.1.3 The Six-Carbon Sugar Is Cleaved into Two Three-Carbon Fragments by Aldolase 431

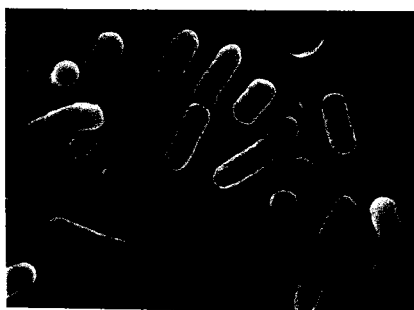
16.1.4 Triose Phosphate Isomerase Salvages a Three-Carbon Fragment 431

16.1.5 Energy Transformation: Phosphorylation Is Coupled to the Oxidation of Glyceraldehyde 3-phosphate by a Thioester Intermediate 433

16.1.6 The Formation of ATP from 1,3-Bisphosphoglycerate 435

16.1.7 The Generation of Additional ATP and the Formation of Pyruvate 435

16.1.8 Energy Yield in the Conversion of Glucose into Pyruvate 437



16.1.9 Maintaining Redox Balance: The Diverse Fates of Pyruvate 438

16.1.10 The Binding Site for NAD<sup>+</sup> Is Similar in Many Dehydrogenases 440

16.1.11 The Entry of Fructose and Galactose into Glycolysis 440

16.1.12 Many Adults Are Intolerant of Milk Because They Are Deficient in Lactase 442

16.1.13 Galactose Is Highly Toxic If the Transferase Is Missing	443
<b>16.2 The Glycolytic Pathway Is Tightly Controlled</b>	<b>443</b>
16.2.1 Phosphofructokinase Is the Key Enzyme in the Control of Glycolysis	444
16.2.2 A Regulated Bifunctional Enzyme Synthesizes and Degrades Fructose 2,6-bisphosphate	445
16.2.3 Hexokinase and Pyruvate Kinase Also Set the Pace of Glycolysis	447
16.2.4 A Family of Transporters Enables Glucose to Enter and Leave Animal Cells	448
16.2.5 Cancer and Glycolysis	449
<b>16.3 Glucose Can Be Synthesized from Noncarbohydrate Precursors</b>	<b>450</b>
16.3.1 Gluconeogenesis Is Not a Reversal of Glycolysis	450
16.3.2 The Conversion of Pyruvate into Phosphoenolpyruvate Begins with the Formation of Oxaloacetate	452
16.3.3 Oxaloacetate Is Shuttled into the Cytosol and Converted into Phosphoenolpyruvate	454
16.3.4 The Conversion of Fructose 1,6-bisphosphate into Fructose 6-phosphate and Orthophosphate Is an Irreversible Step	454
16.3.5 The Generation of Free Glucose Is an Important Control Point	455
16.3.6 Six High-Energy Phosphate Bonds Are Spent in Synthesizing Glucose from Pyruvate	455
<b>16.4 Gluconeogenesis and Glycolysis Are Reciprocally Regulated</b>	<b>456</b>
16.4.1 Substrate Cycles Amplify Metabolic Signals and Produce Heat	457
16.4.2 Lactate and Alanine Formed by Contracting Muscle Are Converted into Glucose by the Liver	458
16.4.3 Glycolysis and Gluconeogenesis Are Evolutionarily Intertwined	460

---

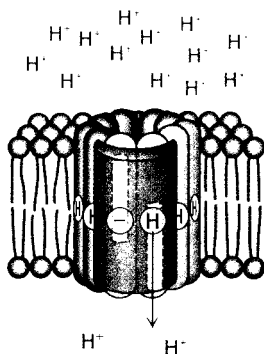
<b>CHAPTER 17 The Citric Acid Cycle</b>	<b>465</b>
17.0.1 An Overview of the Citric Acid Cycle	466
<b>17.1 The Citric Acid Cycle Oxidizes Two-Carbon Units</b>	<b>467</b>
17.1.1 The Formation of Acetyl Coenzyme A from Pyruvate	467
17.1.2 Flexible Linkages Allow Lipoamide to Move Between Different Active Sites	470
17.1.3 Citrate Synthase Forms Citrate from Oxaloacetate and Acetyl Coenzyme A	472
17.1.4 Citrate Is Isomerized into Isocitrate	473
17.1.5 Isocitrate Is Oxidized and Decarboxylated to $\alpha$ -Ketoglutarate	474
17.1.6 Succinyl Coenzyme A Is Formed by the Oxidative Decarboxylation of $\alpha$ -Ketoglutarate	475
17.1.7 A High Phosphoryl-Transfer Potential Compound Is Generated from Succinyl Coenzyme A	475

17.1.8 Oxaloacetate Is Regenerated by the Oxidation of Succinate	477
17.1.9 Stoichiometry of the Citric Acid Cycle	478
<b>17.2 Entry to the Citric Acid Cycle and Metabolism Through It Are Controlled</b>	<b>480</b>
17.2.1 The Pyruvate Dehydrogenase Complex Is Regulated Allosterically and by Reversible Phosphorylation	480
17.2.2 The Citric Acid Cycle Is Controlled at Several Points	481
<b>17.3 The Citric Acid Cycle Is a Source of Biosynthetic Precursors</b>	<b>482</b>
17.3.1 The Citric Acid Cycle Must Be Capable of Being Rapidly Replenished	482
17.3.2 The Disruption of Pyruvate Metabolism Is the Cause of Beriberi and Poisoning by Mercury and Arsenic	483
17.3.3 Speculations on the Evolutionary History of the Citric Acid Cycle	484
<b>17.4 The Glyoxylate Cycle Enables Plants and Bacteria to Grow on Acetate</b>	<b>484</b>

---

<b>CHAPTER 18 Oxidative Phosphorylation</b>	<b>491</b>
---	------------

<b>18.1 Oxidative Phosphorylation in Eukaryotes Takes Place in Mitochondria</b>	<b>492</b>
18.1.1 Mitochondria Are Bounded by a Double Membrane	492
18.1.2 Mitochondria Are the Result of an Endosymbiotic Event	493
<b>18.2 Oxidative Phosphorylation Is Dependent on Electron Transfer</b>	<b>494</b>
18.2.1 High-Energy Electrons: Redox Potentials and Free-Energy Changes	494
18.2.2 A 1.14-Volt Potential Difference Between NADH and O <sub>2</sub> Drives Electron Transport Through the Chain and Favors the Formation of a Proton Gradient	496
18.2.3 Electrons Can Be Transferred Between Groups That Are Not in Contact	497
<b>18.3 The Respiratory Chain Consists of Four Complexes: Three Proton Pumps and a Physical Link to the Citric Acid Cycle</b>	<b>498</b>



18.3.1 The High-Potential Electrons of NADH Enter the Respiratory Chain at NADH-Q Oxidoreductase	499
--	-----

18.3.2 Ubiquinol Is the Entry Point for Electrons from FADH <sub>2</sub> of Flavoproteins	501
18.3.3 Electrons Flow from Ubiquinol to Cytochrome <i>c</i> Through Q-Cytochrome <i>c</i> Oxidoreductase	501
18.3.4 Transmembrane Proton Transport: The Q Cycle	502
18.3.5 Cytochrome <i>c</i> Oxidase Catalyzes the Reduction of Molecular Oxygen to Water	503
18.3.6 Toxic Derivatives of Molecular Oxygen Such as Superoxide Radical Are Scavenged by Protective Enzymes	506
18.3.7 The Conformation of Cytochrome <i>c</i> Has Remained Essentially Constant for More Than a Billion Years	507
<b>18.4 A Proton Gradient Powers the Synthesis of ATP</b>	<b>507</b>
18.4.1 ATP Synthase Is Composed of a Proton-Conducting Unit and a Catalytic Unit	509
18.4.2 Proton Flow Through ATP Synthase Leads to the Release of Tightly Bound ATP: The Binding-Change Mechanism	509
18.4.3 The World's Smallest Molecular Motor: Rotational Catalysis	511
18.4.4 Proton Flow Around the <i>c</i> Ring Powers ATP Synthesis	511
18.4.5 ATP Synthase and G Proteins Have Several Common Features	513
<b>18.5 Many Shuttles Allow Movement Across the Mitochondrial Membranes</b>	<b>514</b>
18.5.1 Electrons from Cytosolic NADH Enter Mitochondria by Shuttles	514
18.5.2 The Entry of ADP into Mitochondria Is Coupled to the Exit of ATP by ATP-ADP Translocase	515
18.5.3 Mitochondrial Transporters for Metabolites Have a Common Tripartite Motif	516
<b>18.6 The Regulation of Oxidative Phosphorylation Is Governed Primarily by the Need for ATP</b>	<b>517</b>
18.6.1 The Complete Oxidation of Glucose Yields About 30 Molecules of ATP	517
18.6.2 The Rate of Oxidative Phosphorylation Is Determined by the Need for ATP	518
18.6.3 Oxidative Phosphorylation Can Be Inhibited at Many Stages	519
18.6.4 Regulated Uncoupling Leads to the Generation of Heat	519
18.6.5 Mitochondrial Diseases Are Being Discovered	520
18.6.6 Mitochondria Play a Key Role in Apoptosis	521
18.6.7 Power Transmission by Proton Gradients: A Central Motif of Bioenergetics	521

---

<b>CHAPTER 19 The Light Reactions of Photosynthesis</b>	<b>527</b>
19.0.1 Photosynthesis: An Overview	528
<b>19.1 Photosynthesis Takes Place in Chloroplasts</b>	<b>528</b>

19.1.1	The Primary Events of Photosynthesis Take Place in Thylakoid Membranes	529
19.1.2	The Evolution of Chloroplasts	529
<b>19.2</b>	<b>Light Absorption by Chlorophyll Induces Electron Transfer</b>	<b>529</b>
19.2.1	Photosynthetic Bacteria and the Photosynthetic Reaction Centers of Green Plants Have a Common Core	531
19.2.2	A Special Pair of Chlorophylls Initiates Charge Separation	532
<b>19.3</b>	<b>Two Photosystems Generate a Proton Gradient and NADPH in Oxygenic Photosynthesis</b>	<b>533</b>
19.3.1	Photosystem II Transfers Electrons from Water to Plastoquinone and Generates a Proton Gradient	534
19.3.2	Cytochrome <i>bf</i> Links Photosystem II to Photosystem I	536
19.3.3	Photosystem I Uses Light Energy to Generate Reduced Ferredoxin, a Powerful Reductant	537
19.3.4	Ferredoxin-NADP <sup>+</sup> Reductase Converts NADP <sup>+</sup> into NADPH	539
<b>19.4</b>	<b>A Proton Gradient Across the Thylakoid Membrane Drives ATP Synthesis</b>	<b>540</b>
19.4.1	The ATP Synthase of Chloroplasts Closely Resembles Those of Mitochondria and Prokaryotes	540
19.4.2	Cyclic Electron Flow Through Photosystem I Leads to the Production of ATP Instead of NADPH	541
19.4.3	The Absorption of Eight Photons Yields One O <sub>2</sub> , Two NADPH, and Three ATP Molecules	542
<b>19.5</b>	<b>Accessory Pigments Funnel Energy into Reaction Centers</b>	<b>543</b>
19.5.1	Resonance Energy Transfer Allows Energy to Move from the Site of Initial Absorbance to the Reaction Center	543
19.5.2	Light-Harvesting Complexes Contain Additional Chlorophylls and Carotenoids	544
19.5.3	Phycobilisomes Serve as Molecular Light Pipes in Cyanobacteria and Red Algae	545
19.5.4	Components of Photosynthesis Are Highly Organized	546
19.5.5	Many Herbicides Inhibit the Light Reaction of Photosynthesis	546
<b>19.6</b>	<b>The Ability to Convert Light into Chemical Energy Is Ancient</b>	<b>547</b>

---

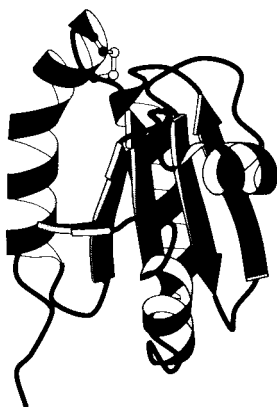
<b>CHAPTER 20</b>	<b>The Calvin Cycle and the Pentose Phosphate Pathway</b>	<b>551</b>
-------------------	---	------------

<b>20.1</b>	<b>The Calvin Cycle Synthesizes Hexoses from Carbon Dioxide and Water</b>	<b>552</b>
20.1.1	Carbon Dioxide Reacts with Ribulose 1,5-bisphosphate to Form Two Molecules of 3-Phosphoglycerate	553
20.1.2	Catalytic Imperfection: Rubisco Also Catalyzes a Wasteful Oxygenase Reaction	555

20.1.3 Hexose Phosphates Are Made from Phosphoglycerate, and Ribulose 1,5-bisphosphate Is Regenerated	556
20.1.4 Three Molecules of ATP and Two Molecules of NADPH Are Used to Bring Carbon Dioxide to the Level of a Hexose	559
20.1.5 Starch and Sucrose Are the Major Carbohydrate Stores in Plants	559

## **20.2 The Activity of the Calvin Cycle Depends on Environmental Conditions** 560

20.2.1 Rubisco Is Activated by Light-Driven Changes in Proton and Magnesium Ion Concentrations	560
20.2.2 Thioredoxin Plays a Key Role in Regulating the Calvin Cycle	560



20.2.3 The C <sub>4</sub> Pathway of Tropical Plants Accelerates Photosynthesis by Concentrating Carbon Dioxide	561
20.2.4 Crassulacean Acid Metabolism Permits Growth in Arid Ecosystems	562

## **20.3 The Pentose Phosphate Pathway Generates NADPH and Synthesizes Five-Carbon Sugars** 563

20.3.1 Two Molecules of NADPH Are Generated in the Conversion of Glucose 6-phosphate into Ribulose 5-phosphate	564
20.3.2 The Pentose Phosphate Pathway and Glycolysis Are Linked by Transketolase and Transaldolase	564
20.3.3 Transketolase and Transaldolase Stabilize Carbanionic Intermediates by Different Mechanisms	566

## **20.4 The Metabolism of Glucose 6-Phosphate by the Pentose Phosphate Pathway Is Coordinated with Glycolysis** 568

20.4.1 The Rate of the Pentose Phosphate Pathway Is Controlled by the Level of NADP <sup>+</sup>	568
20.4.2 The Flow of Glucose 6-phosphate Depends on the Need for NADPH, Ribose 5-phosphate, and ATP	568
20.4.3 Through the Looking Glass: The Calvin Cycle and the Pentose Phosphate Pathway	571

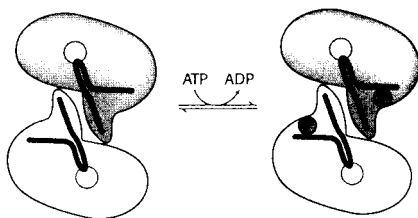
## **20.5 Glucose 6-Phosphate Dehydrogenase Plays a Key Role in Protecting Against Reactive Oxygen Species** 571

20.5.1 Glucose 6-phosphate Dehydrogenase Deficiency Causes a Drug-Induced Hemolytic Anemia	571
--	-----

20.5.2 A Deficiency of Glucose 6-phosphate Dehydrogenase Confers an Evolutionary Advantage in Some Circumstances	572
--	-----

<b>CHAPTER 21 Glycogen Metabolism</b>	<b>577</b>
---------------------------------------	------------

21.0.1 An Overview of Glycogen Metabolism	578
<b>21.1 Glycogen Breakdown Requires the Interplay of Several Enzymes</b>	<b>579</b>
21.1.1 Phosphorylase Catalyzes the Phosphorolytic Cleavage of Glycogen to Release Glucose 1-phosphate	579
21.1.2 A Debranching Enzyme Also Is Needed for the Breakdown of Glycogen	580
21.1.3 Phosphoglucomutase Converts Glucose 1-phosphate into Glucose 6-phosphate	581
21.1.4 Liver Contains Glucose 6-phosphatase, a Hydrolytic Enzyme Absent from Muscle	581
21.1.5 Pyridoxal Phosphate Participates in the Phosphorolytic Cleavage of Glycogen	582
<b>21.2 Phosphorylase Is Regulated by Allosteric Interactions and Reversible Phosphorylation</b>	<b>583</b>



21.2.1 Muscle Phosphorylase Is Regulated by the Intracellular Energy Charge	583
21.2.2 Liver Phosphorylase Produces Glucose for Use by Other Tissues	585
21.2.3 Phosphorylase Kinase Is Activated by Phosphorylation and Calcium Ions	586
<b>21.3 Epinephrine and Glucagon Signal the Need for Glycogen Breakdown</b>	<b>586</b>
21.3.1 G Proteins Transmit the Signal for the Initiation of Glycogen Breakdown	586
21.3.2 Glycogen Breakdown Must Be Capable of Being Rapidly Turned Off	588
21.3.3 The Regulation of Glycogen Phosphorylase Became More Sophisticated As the Enzyme Evolved	588
<b>21.4 Glycogen Is Synthesized and Degraded by Different Pathways</b>	<b>589</b>
21.4.1 UDP-Glucose Is an Activated Form of Glucose	589
21.4.2 Glycogen Synthase Catalyzes the Transfer of Glucose from UDP-Glucose to a Growing Chain	589
21.4.3 A Branching Enzyme Forms $\alpha$ -1,6 Linkages	590
21.4.4 Glycogen Synthase Is the Key Regulatory Enzyme in Glycogen Synthesis	591
21.4.5 Glycogen Is an Efficient Storage Form of Glucose	591

<b>21.5 Glycogen Breakdown and Synthesis Are Reciprocally Regulated</b>	<b>592</b>
21.5.1 Protein Phosphatase 1 Reverses the Regulatory Effects of Kinases on Glycogen Metabolism	592
21.5.2 Insulin Stimulates Glycogen Synthesis by Activating Protein Phosphatase 1	593
21.5.3 Glycogen Metabolism in the Liver Regulates the Blood-Glucose Level	594
21.5.4 A Biochemical Understanding of Glycogen-Storage Diseases Is Possible	595

---

**CHAPTER 22 Fatty Acid Metabolism** **601**

22.0.1 An Overview of Fatty Acid Metabolism	601
<b>22.1 Triacylglycerols Are Highly Concentrated Energy Stores</b>	<b>603</b>
22.1.1 Dietary Lipids Are Digested by Pancreatic Lipases	603
22.1.2 Dietary Lipids Are Transported in Chylomicrons	604
<b>22.2 The Utilization of Fatty Acids As Fuel Requires Three Stages of Processing</b>	<b>605</b>
22.2.1 Triacylglycerols Are Hydrolyzed by Cyclic AMP-Regulated Lipases	605
22.2.2 Fatty Acids Are Linked to Coenzyme A Before They Are Oxidized	606
22.2.3 Carnitine Carries Long-Chain Activated Fatty Acids into the Mitochondrial Matrix	607
22.2.4 Acetyl CoA, NADH, and FADH <sub>2</sub> Are Generated in Each Round of Fatty Acid Oxidation	607
22.2.5 The Complete Oxidation of Palmitate Yields 106 Molecules of ATP	609
<b>22.3 Certain Fatty Acids Require Additional Steps for Degradation</b>	<b>610</b>
22.3.1 An Isomerase and a Reductase Are Required for the Oxidation of Unsaturated Fatty Acids	610
22.3.2 Odd-Chain Fatty Acids Yield Propionyl Coenzyme A in the Final Thiolytic Step	611
22.3.3 Propionyl CoA Is Converted into Succinyl CoA in a Reaction That Requires Vitamin B <sub>12</sub>	611
22.3.4 Fatty Acids Are Also Oxidized in Peroxisomes	614
22.3.5 Ketone Bodies Are Formed from Acetyl Coenzyme A When Fat Breakdown Predominates	615
22.3.6 Ketone Bodies Are a Major Fuel in Some Tissues	616
22.3.7 Animals Cannot Convert Fatty Acids into Glucose	617
<b>22.4 Fatty Acids Are Synthesized and Degraded by Different Pathways</b>	<b>617</b>
22.4.1 The Formation of Malonyl Coenzyme A Is the Committed Step in Fatty Acid Synthesis	617
22.4.2 Intermediates in Fatty Acid Synthesis Are Attached to an Acyl Carrier Protein	618
22.4.3 The Elongation Cycle in Fatty Acid Synthesis	618



22.4.4 Fatty Acids Are Synthesized by a Multifunctional Enzyme Complex in Eukaryotes	620
22.4.5 The Flexible Phosphopantetheinyl Unit of ACP Carries Substrate from One Active Site to Another	621
22.4.6 The Stoichiometry of Fatty Acid Synthesis	622
22.4.7 Citrate Carries Acetyl Groups from Mitochondria to the Cytosol for Fatty Acid Synthesis	622
22.4.8 Sources of NADPH for Fatty Acid Synthesis	623
22.4.9 Fatty Acid Synthase Inhibitors May Be Useful Drugs	623
22.4.10 Variations on a Theme: Polyketide and Nonribosomal Peptide Synthases Resemble Fatty Acid Synthase	624
<b>22.5 Acetyl Coenzyme A Carboxylase Plays a Key Role in Controlling Fatty Acid Metabolism</b>	<b>624</b>
<b>22.6 Elongation and Unsaturation of Fatty Acids Are Accomplished by Accessory Enzyme Systems</b>	<b>626</b>
22.6.1 Membrane-Bound Enzymes Generate Unsaturated Fatty Acids	626
22.6.2 Eicosanoid Hormones Are Derived from Polyunsaturated Fatty Acids	626

---

<b>CHAPTER 23 Protein Turnover and Amino Acid Catabolism</b>	<b>633</b>
--	------------

<b>23.1 Proteins Are Degraded to Amino Acids</b>	<b>634</b>
23.1.1 The Digestion and Absorption of Dietary Proteins	634
23.1.2 Cellular Proteins Are Degraded at Different Rates	634
<b>23.2 Protein Turnover Is Tightly Regulated</b>	<b>635</b>
23.2.1 Ubiquitin Tags Proteins for Destruction	635
23.2.2 The Proteasome Digests the Ubiquitin-Tagged Proteins	636
23.2.3 Protein Degradation Can Be Used to a Regulate Biological Function	638
23.2.4 The Ubiquitin Pathway and the Proteasome Have Prokaryotic Counterparts	638
<b>23.3 The First Step in Amino Acid Degradation Is the Removal of Nitrogen</b>	<b>639</b>
23.3.1 Alpha-Amino Groups Are Converted into Ammonium Ions by the Oxidative Deamination of Glutamate	639
23.3.2 Pyridoxal Phosphate Forms Schiff-Base Intermediates in Aminotransferases	640
23.3.3 Aspartate Aminotransferase Is a Member of a Large and Versatile Family of Pyridoxal-Dependent Enzymes	642
23.3.4 Serine and Threonine Can Be Directly Deaminated	643
23.3.5 Peripheral Tissues Transport Nitrogen to the Liver	643

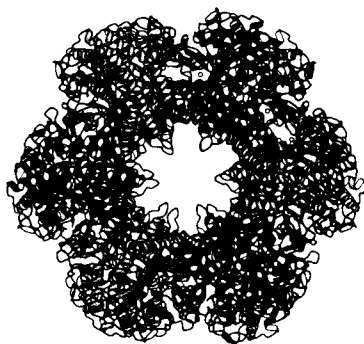
<b>23.4 Ammonium Ion Is Converted into Urea in Most Terrestrial Vertebrates</b>	<b>644</b>
23.4.1 The Urea Cycle Begins with the Formation of Carbamoyl Phosphate	645
23.4.2 The Urea Cycle Is Linked to the Citric Acid Cycle	646
23.4.3 The Evolution of the Urea Cycle	646
23.4.4 Inherited Defects of the Urea Cycle Cause Hyperammonemia and Can Lead to Brain Damage	647
23.4.5 Urea Is Not the Only Means of Disposing of Excess Nitrogen	648
<b>23.5 Carbon Atoms of Degraded Amino Acids Emerge As Major Metabolic Intermediates</b>	<b>649</b>
23.5.1 Pyruvate as an Entry Point into Metabolism	650
23.5.2 Oxaloacetate as an Entry point into Metabolism	650
23.5.3 Alpha-Ketoglutarate as an Entry Point into Metabolism	651
23.5.4 Succinyl Coenzyme A Is a Point of Entry for Several Nonpolar Amino Acids	652
23.5.5 Methionine Degradation Requires the Formation of a Key Methyl Donor, S-Adenosylmethionine	652
23.5.6 The Branched-Chain Amino Acids Yield Acetyl CoA, Acetoacetate, or Propionyl CoA	652
23.5.7 Oxygenases Are Required for the Degradation of Aromatic Amino Acids	654
<b>23.6 Inborn Errors of Metabolism Can Disrupt Amino Acid Degradation</b>	<b>655</b>

---

## **PART III SYNTHESIZING THE MOLECULES OF LIFE**

---

<b>CHAPTER 24 The Biosynthesis of Amino Acids</b>	<b>665</b>
24.0.1 An Overview of Amino Acid Synthesis	666
<b>24.1 Nitrogen Fixation: Microorganisms Use ATP and a Powerful Reductant to Reduce Atmospheric Nitrogen to Ammonia</b>	<b>666</b>
24.1.1 The Iron–Molybdenum Cofactor of Nitrogenase Binds and Reduces Atmospheric Nitrogen	667
24.1.2 Ammonium Ion Is Assimilated into an Amino Acid Through Glutamate and Glutamine	668
<b>24.2 Amino Acids Are Made from Intermediates of the Citric Acid Cycle and Other Major Pathways</b>	<b>670</b>
24.2.1 Human Beings Can Synthesize Some Amino Acids But Must Obtain Others from The Diet	671
24.2.2 A Common Step Determines the Chirality of All Amino Acids	671
24.2.3 An Adenylated Intermediate Is Required to Form Asparagine from Aspartate	673
24.2.4 Glutamate Is the Precursor of Glutamine, Proline, and Arginine	673



24.2.5 Serine, Cysteine, and Glycine Are Formed from 3-Phosphoglycerate	674
24.2.6 Tetrahydrofolate Carries Activated One-Carbon Units at Several Oxidation Levels	674
24.2.7 S-Adenosylmethionine Is the Major Donor of Methyl Groups	676
24.2.8 Cysteine Is Synthesized from Serine and Homocysteine	678
24.2.9 High Homocysteine Levels Are Associated with Vascular Disease	678
24.2.10 Shikimate and Chorismate Are Intermediates in the Biosynthesis of Aromatic Amino Acids	678
24.2.11 Tryptophan Synthetase Illustrates Substrate Channeling in Enzymatic Catalysis	681
<b>24.3 Amino Acid Biosynthesis Is Regulated by Feedback Inhibition</b>	<b>681</b>
24.3.1 Branched Pathways Require Sophisticated Regulation	682
24.3.2 The Activity of Glutamine Synthetase Is Modulated by an Enzymatic Cascade	684
<b>24.4 Amino Acids Are Precursors of Many Biomolecules</b>	<b>685</b>
24.4.1 Glutathione, a Gamma-Glutamyl Peptide, Serves As a Sulfhydryl Buffer and an Antioxidant	686
24.4.2 Nitric Oxide, a Short-Lived Signal Molecule, Is Formed from Arginine	686
24.4.3 Mammalian Porphyrins Are Synthesized from Glycine and Succinyl Coenzyme A	687
24.4.4 Porphyrins Accumulate in Some Inherited Disorders of Porphyrin Metabolism	688
<hr/>	
<b>CHAPTER 25 Nucleotide Biosynthesis</b>	<b>693</b>
25.0.1 Overview of Nucleotide Biosynthesis and Nomenclature	694
<b>25.1 In de Novo Synthesis, the Pyrimidine Ring Is Assembled from Bicarbonate, Aspartate, and Glutamine</b>	<b>694</b>
25.1.1 Bicarbonate and Other Oxygenated Carbon Compounds Are Activated by Phosphorylation	695
25.1.2 The Side Chain of Glutamine Can Be Hydrolyzed to Generate Ammonia	695
25.1.3 Intermediates Can Move Between Active Sites by Channeling	696

25.1.4 Orotate Acquires a Ribose Ring from PRPP to Form a Pyrimidine Nucleotide and Is Converted into Uridylate	696
25.1.5 Nucleotide Mono-, Di-, and Triphosphates Are Interconvertible	697
25.1.6 CTP Is Formed by Amination of UTP	697
<b>25.2 Purine Bases Can Be Synthesized de Novo or Recycled by Salvage Pathways</b>	<b>698</b>



25.2.1 Salvage Pathways Economize Intracellular Energy Expenditure	698
25.2.2 The Purine Ring System Is Assembled on Ribose Phosphate	698
25.2.3 The Purine Ring Is Assembled by Successive Steps of Activation by Phosphorylation Followed by Displacement	699
25.2.4 AMP and GMP Are Formed from IMP	701
<b>25.3 Deoxyribonucleotides Are Synthesized by the Reduction of Ribonucleotides Through a Radical Mechanism</b>	<b>702</b>
25.3.1 Thymidylate Is Formed by the Methylation of Deoxyuridylate	704
25.3.2 Dihydrofolate Reductase Catalyzes the Regeneration of Tetrahydrofolate, a One-Carbon Carrier	705
25.3.3 Several Valuable Anticancer Drugs Block the Synthesis of Thymidylate	705
<b>25.4 Key Steps in Nucleotide Biosynthesis Are Regulated by Feedback Inhibition</b>	<b>707</b>
<b>25.5 NAD<sup>+</sup>, FAD, and Coenzyme A Are Formed from ATP</b>	<b>708</b>
<b>25.6 Disruptions in Nucleotide Metabolism Can Cause Pathological Conditions</b>	<b>709</b>
25.6.1 Purines Are Degraded to Urate in Human Beings	709

25.6.2 Lesch-Nyhan Syndrome Is a Dramatic Consequence of Mutations in a Salvage-Pathway Enzyme	710
--	-----

---

<b>CHAPTER 26 The Biosynthesis of Membrane Lipids and Steroids</b>	<b>715</b>
--	------------

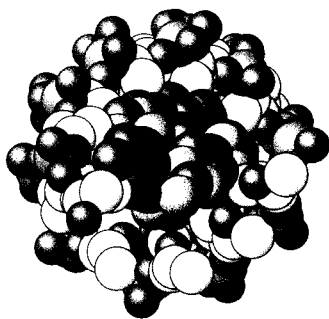
26.1 Phosphatidate Is a Common Intermediate in the Synthesis of Phospholipids and Triacylglycerols	716
26.1.1 The Synthesis of Phospholipids Requires an Activated Intermediate	716
26.1.2 Plasmalogens and Other Ether Phospholipids Are Synthesized from Dihydroxyacetone Phosphate	718
26.1.3 Sphingolipids Are Synthesized from Ceramide	720
26.1.4 Gangliosides Are Carbohydrate-Rich Sphingolipids That Contain Acidic Sugars	721
26.1.5 Sphingolipids Provide Diversity in Lipid Structure and Function	721
26.1.6 Respiratory Distress Syndrome and Tay-Sachs Disease Result from the Disruption of Lipid Metabolism	721
26.2 Cholesterol Is Synthesized from Acetyl Coenzyme A in Three Stages	722
26.2.1 The Synthesis of Mevalonate, Which Is Activated as Isopentyl Pyrophosphate, Initiates the Synthesis of Cholesterol	723
26.2.2 Squalene (C <sub>30</sub> ) Is Synthesized from Six Molecules of Isopentyl Pyrophosphate (C <sub>5</sub> )	725
26.2.3 Squalene Cyclizes to Form Cholesterol	725
26.3 The Complex Regulation of Cholesterol Biosynthesis Takes Place at Several Levels	726
26.3.1 Lipoproteins Transport Cholesterol and Triacylglycerols Throughout the Organism	727
26.3.2 The Blood Levels of Certain Lipoproteins Can Serve Diagnostic Purposes	728
26.3.3 Low-Density Lipoproteins Play a Central Role in Cholesterol Metabolism	728
26.3.4 The LDL Receptor Is a Transmembrane Protein with Five Different Functional Regions	730
26.3.5 The Absence of the LDL Receptor Leads to Hypercholesteremia and Atherosclerosis	730
26.3.6 The Clinical Management of Cholesterol Levels Can Be Understood at a Biochemical Level	731
26.4 Important Derivatives of Cholesterol Include Bile Salts and Steroid Hormones	731
26.4.1 The Nomenclature of Steroid Hormones	733
26.4.2 Steroids Are Hydroxylated by Cytochrome P450 Monooxygenases That Utilize NADPH and O <sub>2</sub>	734
26.4.3 The Cytochrome P450 System Is Widespread and Performs a Protective Enzyme Function	735
26.4.4 Pregnenolone, a Precursor for Many Other Steroids, Is Formed from Cholesterol by Cleavage of Its Side Chain	735
26.4.5 The Synthesis of Progesterone and Corticosteroids from Pregnenolone	735
26.4.6 The Synthesis of Androgens and Estrogens from Pregnenolone	736

26.4.7 Vitamin D Is Derived from Cholesterol by the Ring-Splitting Activity of Light	737
26.4.8 Isopentenyl Pyrophosphate Is a Precursor for a Wide Variety of Biomolecules	738

---

<b>CHAPTER 27 DNA Replication, Recombination, and Repair</b>	<b>745</b>
--	------------

27.1 DNA Can Assume a Variety of Structural Forms	745
27.1.1 A-DNA Is a Double Helix with Different Characteristics from Those of the More Common B-DNA	747
27.1.2 The Major and Minor Grooves Are Lined by Sequence-Specific Hydrogen-Bonding Groups	748
27.1.3 The Results of Studies of Single Crystals of DNA Revealed Local Variations in DNA Structure	748
27.1.4 Z-DNA Is a Left-Handed Double Helix in Which Backbone Phosphates Zigzag	749
27.2 DNA Polymerases Require a Template and a Primer	750



27.2.1 All DNA Polymerases Have Structural Features in Common	750
27.2.2 Two Bound Metal Ions Participate in the Polymerase Reaction	751
27.2.3 The Specificity of Replication Is Dictated by Hydrogen Bonding and Complementarity of Shape Between Bases	751
27.2.4 Many Polymerases Proofread the Newly Added Bases and Excise Errors	752
27.2.5 The Separation of DNA Strands Requires Specific Helicases and ATP Hydrolysis	753
27.3 Double-Stranded DNA Can Wrap Around Itself to Form Supercoiled Structures	754
27.3.1 The Linking Number of DNA, a Topological Property, Determines the Degree of Supercoiling	754
27.3.2 Helical Twist and Superhelical Writhe Are Correlated with Each Other Through the Linking Number	755
27.3.3 Type I Topoisomerases Relax Supercoiled Structures	756
27.3.4 Type II Topoisomerases Can Introduce Negative Supercoils Through Coupling to ATP Hydrolysis	757
27.4 DNA Replication of Both Strands Proceeds Rapidly from Specific Start Sites	759

27.4.1 An RNA Primer Synthesized by Primase Enables DNA Synthesis to Begin	760
27.4.2 One Strand of DNA Is Made Continuously, Whereas the Other Strand Is Synthesized in Fragments	761
27.4.3 DNA Ligase Joins Ends of DNA in Duplex Regions	761
27.4.4 DNA Replication Requires Highly Processive Polymerases	762
27.4.5 The Leading and Lagging Strands Are Synthesized in a Coordinated Fashion	763
27.4.6 DNA Synthesis Is More Complex in Eukaryotes Than in Prokaryotes	764
27.4.7 Telomeres Are Unique Structures at the Ends of Linear Chromosomes	765
27.4.8 Telomeres Are Replicated by Telomerase, a Specialized Polymerase That Carries Its Own RNA Template	765
<b>27.5 Double-Stranded DNA Molecules with Similar Sequences Sometimes Recombine</b>	<b>766</b>
27.5.1 Recombination Reactions Proceed Through Holliday Junction Intermediates	766
27.5.2 Recombinases Are Evolutionarily Related to Topoisomerases	768
<b>27.6 Mutations Are Produced by Several Types of Changes in the Base Sequence of DNA</b>	<b>768</b>
27.6.1 Some Chemical Mutagens Are Quite Specific	769
27.6.2 Ultraviolet Light Produces Pyrimidine Dimers	770
27.6.3 A Variety of DNA-Repair Pathways Are Utilized	770
27.6.4 The Presence of Thymine Instead of Uracil in DNA Permits the Repair of Deaminated Cytosine	771
27.6.5 Many Cancers Are Caused by Defective Repair of DNA	772
27.6.6 Some Genetic Diseases Are Caused by the Expansion of Repeats of Three Nucleotides	773
27.6.7 Many Potential Carcinogens Can Be Detected by Their Mutagenic Action on Bacteria	773

---

<b>CHAPTER 28 RNA Synthesis and Splicing</b>	<b>781</b>
--	------------

28.0.1 An Overview of RNA Synthesis	782
<b>28.1 Transcription Is Catalyzed by RNA Polymerase</b>	<b>783</b>
28.1.1 Transcription is Initiated at Promoter Sites on the DNA Template	784
28.1.2 Sigma Subunits of the RNA Polymerase Recognize Promoter Sites	785
28.1.3 RNA Polymerase Must Unwind the Template Double Helix for Transcription to Take Place	786
28.1.4 RNA Chains Are Formed de Novo and Grow in the 5'-to-3' Direction	786
28.1.5 Elongation Takes Place at Transcription Bubbles That Move Along the DNA Template	787
28.1.6 An RNA Hairpin Followed by Several Uracil Residues Terminates the Transcription of Some Genes	788

28.1.7 The Rho Protein Helps Terminate the Transcription of Some Genes	789
28.1.8 Precursors of Transfer and Ribosomal RNA Are Cleaved and Chemically Modified After Transcription	790
28.1.9 Antibiotic Inhibitors of Transcription	791
<b>28.2 Eukaryotic Transcription and Translation Are Separated in Space and Time</b>	<b>792</b>
28.2.1 RNA in Eukaryotic Cells Is Synthesized by Three Types of RNA Polymerase	793
28.2.2 Cis- and Trans-Acting Elements: Locks and Keys of Transcription	794
28.2.3 Most Promoters for RNA Polymerase II Contain a TATA Box Near the Transcription Start Site	794
28.2.4 The TATA-Box-Binding Protein Initiates the Assembly of the Active Transcription Complex	795
28.2.5 Multiple Transcription Factors Interact with Eukaryotic Promoters	796
28.2.6 Enhancer Sequences Can Stimulate Transcription at Start Sites Thousand of Bases Away	797
<b>28.3 The Transcription Products of All Three Eukaryotic Polymerases Are Processed</b>	<b>797</b>
28.3.1 The Ends of the Pre-mRNA Transcript Acquire a 5' Cap and a 3' Poly(A) Tail	798
28.3.2 RNA Editing Changes the Proteins Encoded by mRNA	798
28.3.3 Splice Sites in mRNA Precursors Are Specified by Sequences at the Ends of Introns	799
28.3.4 Splicing Consists of Two Transesterification Reactions	800
28.3.5 Small Nuclear RNAs in Spliceosomes Catalyze the Splicing of mRNA Precursors	801
28.3.6 Some Pre-mRNA Molecules Can Be Spliced in Alternative Ways to Yield Different mRNAs	803
<b>28.4 The Discovery of Catalytic RNA Was Revealing in Regard to Both Mechanism and Evolution</b>	<b>804</b>
<hr/>	
<b>CHAPTER 29 Protein Synthesis</b>	<b>813</b>
<b>29.1 Protein Synthesis Requires the Translation of Nucleotide Sequences into Amino Acid Sequences</b>	<b>814</b>
29.1.1 The Synthesis of Long Proteins Requires a Low Error Frequency	814
29.1.2 Transfer RNA Molecules Have a Common Design	815
29.1.3 The Activated Amino Acid and the Anticodon of tRNA Are at Opposite Ends of the L-Shaped Molecule	817
<b>29.2 Aminoacyl-Transfer RNA Synthetases Read the Genetic Code</b>	<b>817</b>
29.2.1 Amino Acids Are First Activated by Adenylation	818



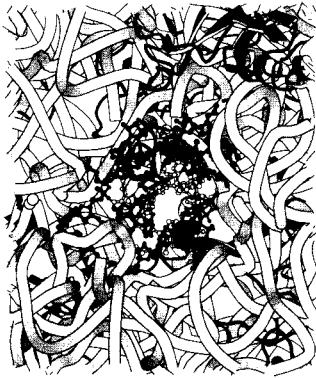
29.2.2 Aminoacyl-tRNA Synthetases Have Highly Discriminating Amino Acid Activation Sites 819

29.2.3 Proofreading by Aminoacyl-tRNA Synthetases Increases the Fidelity of Protein Synthesis 820

29.2.4 Synthetases Recognize the Anticodon Loops and Acceptor Stems of Transfer RNA Molecules 820

29.2.5 Aminoacyl-tRNA Synthetases Can Be Divided into Two Classes 822

**29.3 A Ribosome Is a Ribonucleoprotein Particle (70S) Made of a Small (30S) and a Large (50S) Subunit 823**



29.3.1 Ribosomal RNAs (5S, 16S, and 23S rRNA) Play a Central Role in Protein Synthesis 824

29.3.2 Proteins Are Synthesized in the Amino-to-Carboxyl Direction 826

29.3.3 Messenger RNA Is Translated in the 5'-to-3' Direction 826

29.3.4 The Start Signal Is AUG (or GUG) Preceded by Several Bases That Pair with 16S rRNA 827

29.3.5 Bacterial Protein Synthesis Is Initiated by Formylmethionyl Transfer RNA 828

29.3.6 Ribosomes Have Three tRNA-Binding Sites That Bridge the 30S and 50S Subunits 828

29.3.7 The Growing Polypeptide Chain Is Transferred Between tRNAs on Peptide-Bond Formation 829

29.3.8 Only the Codon-Anticodon Interactions Determine the Amino Acid That Is Incorporated 831

29.3.9 Some Transfer RNA Molecules Recognize More Than One Codon Because of Wobble in Base Pairing 832

**29.4 Protein Factors Play Key Roles in Protein Synthesis 833**

29.4.1 Formylmethionyl-tRNA<sub>f</sub> Is Placed in the P Site of the Ribosome During Formation of the 70S Initiation Complex 833

29.4.2 Elongation Factors Deliver Aminoacyl-tRNA to the Ribosome 834

29.4.3 The Formation of a Peptide Bond Is Followed by the GTP-Driven Translocation of tRNAs and mRNA 834

29.4.4 Protein Synthesis Is Terminated by Release Factors That Read Stop Codons 835

**29.5 Eukaryotic Protein Synthesis Differs from Prokaryotic Protein Synthesis Primarily in Translation Initiation 837**

29.5.1 Many Antibiotics Work by Inhibiting Protein Synthesis	838
29.5.2 Diphtheria Toxin Blocks Protein Synthesis in Eukaryotes by Inhibiting Translocation	839

---

## **CHAPTER 30 The Integration of Metabolism 845**

<b>30.1 Metabolism Consists of Highly Interconnected Pathways</b>	<b>845</b>
30.1.1 Recurring Motifs in Metabolic Regulation	846
30.1.2 Major Metabolic Pathways and Control Sites	847
30.1.3 Key Junctions: Glucose 6-phosphate, Pyruvate, and Acetyl CoA	849
<b>30.2 Each Organ Has a Unique Metabolic Profile</b>	<b>851</b>
<b>30.3 Food Intake and Starvation Induce Metabolic Change</b>	<b>854</b>
30.3.1 Metabolic Adaptations in Prolonged Starvation Minimize Protein Degradation	856
30.3.2 Metabolic Derangements in Diabetes Result from Relative Insulin Insufficiency and Glucagon Excess	858
30.3.3 Caloric Homeostasis: A Means of Regulating Body Weight	859
<b>30.4 Fuel Choice During Exercise Is Determined by Intensity and Duration of Activity</b>	<b>860</b>
<b>30.5 Ethanol Alters Energy Metabolism in the Liver</b>	<b>861</b>

---

## **CHAPTER 31 The Control of Gene Expression 867**

<b>31.1 Prokaryotic DNA-Binding Proteins Bind Specifically to Regulatory Sites in Operons</b>	<b>868</b>
31.1.1 An Operon Consists of Regulatory Elements and Protein-Encoding Genes	869
31.1.2 The <i>lac</i> Operator Has a Symmetric Base Sequence	870
31.1.3 The <i>lac</i> Repressor Protein in the Absence of Lactose Binds to the Operator and Blocks Transcription	870
31.1.4 Ligand Binding Can Induce Structural Changes in Regulatory Proteins	871
31.1.5 The Operon Is a Common Regulatory Unit in Prokaryotes	872
31.1.6 Transcription Can Be Stimulated by Proteins That Contact RNA Polymerase	873
31.1.7 The Helix-Turn-Helix Motif Is Common to Many Prokaryotic DNA-Binding Proteins	873
<b>31.2 The Greater Complexity of Eukaryotic Genomes Requires Elaborate Mechanisms for Gene Regulation</b>	<b>874</b>
31.2.1 Nucleosomes Are Complexes of DNA and Histones	875
31.2.2 Eukaryotic DNA Is Wrapped Around Histones to Form Nucleosomes	876
31.2.3 The Control of Gene Expression Requires Chromatin Remodeling	877

31.2.4 Enhancers Can Stimulate Transcription by Perturbing Chromatin Structure	878
31.2.5 The Modification of DNA Can Alter Patterns of Gene Expression	878
31.3 Transcriptional Activation and Repression Are Mediated by Protein–Protein Interactions	879



31.3.1 Steroids and Related Hydrophobic Molecules Pass Through Membranes and Bind to DNA-Binding Receptors	879
31.3.2 Nuclear Hormone Receptors Regulate Transcription by Recruiting Coactivators and Corepressors to the Transcription Complex	881
31.3.3 Steroid-Hormone Receptors Are Targets for Drugs	883
31.3.4 Chromatin Structure Is Modulated Through Covalent Modifications of Histone Tails	884
31.3.5 Histone Deacetylases Contribute to Transcriptional Repression	885
31.3.6 Ligand Binding to Membrane Receptors Can Regulate Transcription Through Phosphorylation Cascades	886
31.3.7 Chromatin Structure Effectively Decreases the Size of the Genome	887
31.4 Gene Expression Can Be Controlled at Posttranscriptional Levels	887
31.4.1 Attenuation Is a Prokaryotic Mechanism for Regulating Transcription Through Modulation of Nascent RNA Secondary Structure	887
31.4.2 Genes Associated with Iron Metabolism Are Translationally Regulated in Animals	888

---

## **PART IV RESPONDING TO ENVIRONMENTAL CHANGES**

---

### **CHAPTER 32 Sensory Systems 897**

32.1 A Wide Variety of Organic Compounds Are Detected by Olfaction	898
32.1.1 Olfaction Is Mediated by an Enormous Family of Seven-Transmembrane-Helix Receptors	899
32.1.2 Odorants Are Decoded by a Combinatorial Mechanism	901
32.1.3 Functional Magnetic Resonance Imaging Reveals Regions of the Brain Processing Sensory Information	902

<b>32.2 Taste Is a Combination of Senses That Function by Different Mechanisms</b>	<b>903</b>
32.2.1 Sequencing the Human Genome Led to the Discovery of a Large Family of 7TM Bitter Receptors	904
32.2.2 A Family of 7TM Receptors Respond to Sweet Compounds	906
32.2.3 Salty Tastes Are Detected Primarily by the Passage of Sodium Ions Through Channels	906
32.2.4 Sour Tastes Arise from the Effects of Hydrogen Ions (Acids) on Channels	906
32.2.5 Umami, the Taste of Glutamate, Is Detected by a Specialized Form of Glutamate Receptor	907
<b>32.3 Photoreceptor Molecules in the Eye Detect Visible Light</b>	<b>907</b>



32.3.1 Rhodopsin, a Specialized 7TM Receptor, Absorbs Visible Light	908
32.3.2 Light Absorption Induces a Specific Isomerization of Bound 11- <i>cis</i> -Retinal	909
32.3.3 Light-Induced Lowering of the Calcium Level Coordinates Recovery	910
32.3.4 Color Vision Is Mediated by Three Cone Receptors That Are Homologs of Rhodopsin	911
32.3.5 Rearrangements in the Genes for the Green and Red Pigments Lead to "Color Blindness"	912
<b>32.4 Hearing Depends on the Speedy Detection of Mechanical Stimuli</b>	<b>913</b>
32.4.1 Hair Cells Use a Connected Bundle of Stereocilia to Detect Tiny Motions	913
32.4.2 Mechanosensory Channels Have Been Identified in <i>Drosophila</i> and Bacteria	914
<b>32.5 Touch Includes the Sensing of Pressure, Temperature, and Other Factors</b>	<b>915</b>
32.5.1 Studies of Capsaicin, the Active Ingredient in "Hot" Peppers, Reveal a Receptor for Sensing High Temperatures and Other Painful Stimuli	915
32.5.2 Subtle Sensory Systems Detect Other Environmental Factors Such as Earth's Magnetic Field	917

---

## **CHAPTER 33 The Immune System** **921**

33.0.1 The Immune System Adapts, Using the Principles of Evolution	921
<b>33.1 Antibodies Possess Distinct Antigen-Binding and Effector Units</b>	<b>922</b>

<b>33.2 The Immunoglobulin Fold Consists of a Beta-Sandwich Framework with Hypervariable Loops</b>	<b>926</b>
<b>33.3 Antibodies Bind Specific Molecules Through Their Hypervariable Loops</b>	<b>927</b>
33.3.1 X-Ray Analyses Have Revealed How Antibodies Bind Antigens	927
33.3.2 Large Antigens Bind Antibodies with Numerous Interactions	929
<b>33.4 Diversity Is Generated By Gene Rearrangements</b>	<b>929</b>
33.4.1 J (Joining) Genes and D (Diversity) Genes Increase Antibody Diversity	930
33.4.2 More Than $10^8$ Antibodies Can Be Formed by Combinatorial Association and Somatic Mutation	931
33.4.3 The Oligomerization of Antibodies Expressed on the Surface of Immature B Cells Triggers Antibody Secretion	932
33.4.4 Different Classes of Antibodies Are Formed by the Hopping of $V_H$ Genes	933
<b>33.5 Major-Histocompatibility-Complex Proteins Present Peptide Antigens on Cell Surfaces for Recognition by T-Cell Receptors</b>	<b>934</b>
33.5.1 Peptides Presented by MHC Proteins Occupy a Deep Groove Flanked by Alpha-Helices	935
33.5.2 T-Cell Receptors Are Antibody-like Proteins Containing Variable and Constant Regions	937
33.5.3 CD8 on Cytotoxic T Cells Acts in Concert with T-Cell Receptors	937
33.5.4 Helper T Cells Stimulate Cells That Display Foreign Peptides Bound to Class II MHC Proteins	939
33.5.5 Helper T Cells Rely on T-Cell Receptor and CD4 to Recognize Foreign Peptides on Antigen-Presenting Cells	940
33.5.6 MHC Proteins Are Highly Diverse	941
33.5.7 Human Immunodeficiency Viruses Subvert the Immune System by Destroying Helper T Cells	942
<b>33.6 Immune Responses Against Self-Antigens Are Suppressed</b>	<b>943</b>
33.6.1 T Cells Are Subject to Positive and Negative Selection in the Thymus	943

33.6.2 Autoimmune Diseases Result from the Generation of Immune Responses Against Self-Antigens	944
33.6.3 The Immune System Plays a Role in Cancer Prevention	945

---

<b>CHAPTER 34 Molecular Motors</b>	<b>951</b>
<b>34.1 Most Molecular-Motor Proteins Are Members of the P-Loop NTPase Superfamily</b>	<b>951</b>
34.1.1 A Motor Protein Consists of an ATPase Core and an Extended Structure	952
34.1.2 ATP Binding and Hydrolysis Induce Changes in the Conformation and Binding Affinity of Motor Proteins	954
<b>34.2 Myosins Move Along Actin Filaments</b>	<b>956</b>
34.2.1 Muscle Is a Complex of Myosin and Actin	957
34.2.2 Actin Is a Polar, Self-Assembling, Dynamic Polymer	958
34.2.3 Motions of Single Motor Proteins Can Be Directly Observed	960
34.2.4 Phosphate Release Triggers the Myosin Power Stroke	960
34.2.5 The Length of the Lever Arm Determines Motor Velocity	962
<b>34.3 Kinesin and Dynein Move Along Microtubules</b>	<b>962</b>
34.3.1 Microtubules Are Hollow Cylindrical Polymers	963
34.3.2 Kinesin Motion Is Highly Processive	964
34.3.3 Small Structural Changes Can Reverse Motor Polarity	966
<b>34.4 A Rotary Motor Drives Bacterial Motion</b>	<b>967</b>
34.4.1 Bacteria Swim by Rotating Their Flagella	967
34.4.2 Proton Flow Drives Bacterial Flagellar Rotation	968
34.4.3 Bacterial Chemotaxis Depends on Reversal of the Direction of Flagellar Rotation	969
Appendixes	A1
Glossary of Compounds	B1
Answers to Problems	C1
Index	D1